

WHAT DO I NEED TO DO IF I AM SELF- EMPLOYED?

1

Declare your annual net trade income to the Inland Revenue Authority of Singapore (IRAS)

Form B

Net Trade
Income

—	—
—	—
—	—
—	—

2

Contribute to your **Medisave** Account if your yearly net trade income is more than \$6,000

- Pay within 30 days upon receiving IRAS' Notice of Computation or payment advice from CPF Board
- Settle your Medisave contributions payable to renew your LTA licence



HOW MUCH

MEDISAVE
DO I NEED TO
CONTRIBUTE?



Log in to *my cpf* Online Services - My Messages to check your outstanding Medisave liabilities

or

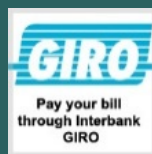


Use the *Self-Employed Medisave Contribution Calculator* to compute the amount of Medisave contributions payable



e-Cashier on the CPF website

or



Sign up to pay monthly instalments through *GIRO* upon making an upfront payment

or



NETS payment at any SingPost branches / AXS stations / SAM

HOW TO CONTRIBUTE TO MY MEDISAVE?

**Good
to
know**

If you are no longer a self-employed person, you may update your self-employed status via *my cpf* Online Services - My Requests. However, you will still be required to pay any outstanding Medisave liabilities.



BENEFITS

OF CONTRIBUTING
TO MEDISAVE



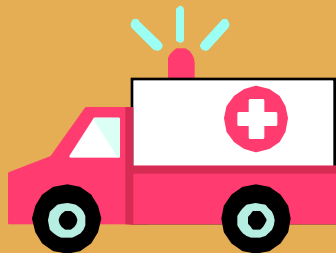
Save for future
Healthcare needs



Enjoy tax relief of up to 37%
of your assessable NTI

6%

Earn up to 6% interest
per annum on your Medisave savings



Pay your MediShield Life or
Integrated Shield Plan premiums



Enjoy hassle-free renewal of
your LTA licence



Receive Workfare payouts*

*Terms and conditions apply. More
information can be found at

www.workfare.gov.sg





To find out more about the Self-Employed Scheme, please contact us at:



www.cpf.gov.sg



1800-227-1188
Mondays – Fridays
8:00am – 5:30pm



member@cpf.gov.sg